

AP[®]

Week #2 Review
Warm-ups

AP[®] Calculus BC

2015 Free-Response Questions

© 2015 The College Board. College Board, Advanced Placement Program, AP, AP Central, and the acorn logo are registered trademarks of the College Board.

Visit the College Board on the Web: www.collegeboard.org.

AP Central is the official online home for the AP Program: apcentral.collegeboard.org.

AB/BC

2015 AP[®] CALCULUS BC FREE-RESPONSE QUESTIONS

CALCULUS BC
SECTION II, Part A

Time—30 minutes

Number of problems—2

units
feet
hours

A graphing calculator is required for these problems.

rate flows in

1. The rate at which rainwater flows into a drainpipe is modeled by the function R , where $R(t) = 20\sin\left(\frac{t^2}{35}\right)$ cubic feet per hour, t is measured in hours, and $0 \leq t \leq 8$. The pipe is partially blocked, allowing water to drain out the other end of the pipe at a rate modeled by $D(t) = -0.04t^3 + 0.4t^2 + 0.96t$ cubic feet per hour, for $0 \leq t \leq 8$. There are 30 cubic feet of water in the pipe at time $t = 0$.
- (a) How many cubic feet of rainwater flow into the pipe during the 8-hour time interval $0 \leq t \leq 8$? rate flows out
- (b) Is the amount of water in the pipe increasing or decreasing at time $t = 3$ hours? Give a reason for your answer. initial Derivative!
- (c) At what time t , $0 \leq t \leq 8$, is the amount of water in the pipe at a minimum? Justify your answer.
- (d) The pipe can hold 50 cubic feet of water before overflowing. For $t > 8$, water continues to flow into and out of the pipe at the given rates until the pipe begins to overflow. Write, but do not solve, an equation involving one or more integrals that gives the time w when the pipe will begin to overflow.

(a) Amount of water that FLOWS IN!

$$\int_0^8 20\sin\left(\frac{t^2}{35}\right) dt = \boxed{76.570 \text{ ft}^3}$$

math 9

(b) Amount of water = $A(t) = 30 + \int_0^t R(t) dt - \int_0^t D(t) dt$

↑ initial
↑ amt. flows in
↑ amt. flows out

$$A'(t) = R(t) - D(t)$$

$$A'(3) = R(3) - D(3)$$

$$= 20\sin\left(\frac{3^2}{35}\right) - (-0.04(3)^3 + 0.4(3)^2 + 0.96(3)) =$$

$$\boxed{-0.314 < 0}$$

© 2015 The College Board.
Visit the College Board on the Web: www.collegeboard.org.

GO ON TO THE NEXT PAGE.

Since $A'(3)$ is negative,
the amount of water is decr. at $t=3$

(c) time = ? Amt. of water at a minimum

* $A(t)$ is absolute min when $A'(t) = 0$ or at endpoints $t = 0$ or $t = 8$.

$$A'(t) = 0$$

$$R(t) - D(t) = 0$$

$$20 \sin\left(\frac{t^2}{35}\right) - (-0.4t^3 + 4t^2 + 9.6t) = 0$$

y_1 y_2

2nd Trace intersect

$$t = 3.272 \text{ hr}$$

use $A(t)$ eqn
from
part b

t	$A(t)$
0	30
8	48.544
3.272	27.965 min

$t = 3.272 \text{ hrs}$

(d) holds 50 ft^3 water before overflowing
time = w

$$30 + \int_0^w R(t) dt - \int_0^w D(t) dt = 50$$

**AP[®] CALCULUS AB/CALCULUS BC
2015 SCORING GUIDELINES**

Question 1

The rate at which rainwater flows into a drainpipe is modeled by the function R , where $R(t) = 20 \sin\left(\frac{t^2}{35}\right)$ cubic feet per hour, t is measured in hours, and $0 \leq t \leq 8$. The pipe is partially blocked, allowing water to drain out the other end of the pipe at a rate modeled by $D(t) = -0.04t^3 + 0.4t^2 + 0.96t$ cubic feet per hour, for $0 \leq t \leq 8$. There are 30 cubic feet of water in the pipe at time $t = 0$.

- (a) How many cubic feet of rainwater flow into the pipe during the 8-hour time interval $0 \leq t \leq 8$?
- (b) Is the amount of water in the pipe increasing or decreasing at time $t = 3$ hours? Give a reason for your answer.
- (c) At what time t , $0 \leq t \leq 8$, is the amount of water in the pipe at a minimum? Justify your answer.
- (d) The pipe can hold 50 cubic feet of water before overflowing. For $t > 8$, water continues to flow into and out of the pipe at the given rates until the pipe begins to overflow. Write, but do not solve, an equation involving one or more integrals that gives the time w when the pipe will begin to overflow.

(a) $\int_0^8 R(t) dt = 76.570$

2 : $\begin{cases} 1 : \text{integrand} \\ 1 : \text{answer} \end{cases}$

(b) $R(3) - D(3) = -0.313632 < 0$
 Since $R(3) < D(3)$, the amount of water in the pipe is decreasing at time $t = 3$ hours.

2 : $\begin{cases} 1 : \text{considers } R(3) \text{ and } D(3) \\ 1 : \text{answer and reason} \end{cases}$

(c) The amount of water in the pipe at time t , $0 \leq t \leq 8$, is $30 + \int_0^t [R(x) - D(x)] dx$.

3 : $\begin{cases} 1 : \text{considers } R(t) - D(t) = 0 \\ 1 : \text{answer} \\ 1 : \text{justification} \end{cases}$

$R(t) - D(t) = 0 \Rightarrow t = 0, 3.271658$

t	Amount of water in the pipe
0	30
3.271658	27.964561
8	48.543686

The amount of water in the pipe is a minimum at time $t = 3.272$ (or 3.271) hours.

(d) $30 + \int_0^w [R(t) - D(t)] dt = 50$

2 : $\begin{cases} 1 : \text{integral} \\ 1 : \text{equation} \end{cases}$

BC

2015 AP[®] CALCULUS BC FREE-RESPONSE QUESTIONS

units
none

Parametric eqns.

2. At time $t \geq 0$, a particle moving along a curve in the xy -plane has position $(x(t), y(t))$ with velocity vector

$v(t) = (\cos(t^2), e^{0.5t})$. At $t = 1$, the particle is at the point $(3, 5)$.

- (a) Find the x-coordinate of the position of the particle at time $t = 2$.
- (b) For $0 < t < 1$, there is a point on the curve at which the line tangent to the curve has a slope of 2. At what time is the object at that point?
- (c) Find the time at which the speed of the particle is 3.
- (d) Find the total distance traveled by the particle from time $t = 0$ to time $t = 1$.

$v(t) = (\cos t^2, e^{0.5t})$
 $x'(t) \quad y'(t)$

$x(1) = 3 \quad y(1) = 5$

(a) x-coord. of position at $t = 2$

END OF PART A OF SECTION II

$x(2) - x(1) = \int_1^2 x'(t) dt$

$x(2) - 3 = \int_1^2 \cos t^2$

$x(2) - 3 = -0.443$

$x(2) = 2.557$

(b) time = ? slope = 2

slope of tangent = $\frac{dy}{dx} = \frac{e^{0.5t}}{\cos t^2} = 2$

$y_1 \quad y_2$

2nd trace intersect

$t = 0.840$

(c) time = ? speed = 3

$$\text{speed} = \sqrt{(x'(t))^2 + (y'(t))^2}$$

$$\sqrt{\underbrace{(\cos t^2)^2}_{y_1} + \underbrace{(e^{.5t})^2}_{y_2}} = 3$$

2nd Trace intersect

$$\boxed{t = 2.196}$$

(d) Total distance = Arc Length from $t=0 \rightarrow t=1$

$$\text{Arc Length} = \int_a^b \sqrt{(x'(t))^2 + (y'(t))^2} dt$$

$$\int_0^1 \sqrt{(\cos t^2)^2 + (e^{.5t})^2} dt = \boxed{1.595}$$

AP[®] CALCULUS BC
2015 SCORING GUIDELINES

Question 2

At time $t \geq 0$, a particle moving along a curve in the xy -plane has position $(x(t), y(t))$ with velocity vector $v(t) = (\cos(t^2), e^{0.5t})$. At $t = 1$, the particle is at the point $(3, 5)$.

- (a) Find the x -coordinate of the position of the particle at time $t = 2$.
- (b) For $0 < t < 1$, there is a point on the curve at which the line tangent to the curve has a slope of 2. At what time is the object at that point?
- (c) Find the time at which the speed of the particle is 3.
- (d) Find the total distance traveled by the particle from time $t = 0$ to time $t = 1$.

(a) $x(2) = 3 + \int_1^2 \cos(t^2) dt = 2.557$ (or 2.556)

3 : { 1 : integral
1 : uses initial condition
1 : answer

(b) $\frac{dy}{dx} = \frac{dy/dt}{dx/dt} = \frac{e^{0.5t}}{\cos(t^2)}$

$$\frac{e^{0.5t}}{\cos(t^2)} = 2$$

$$t = 0.840$$

2 : { 1 : slope in terms of t
1 : answer

(c) Speed = $\sqrt{\cos^2(t^2) + e^t}$

$$\sqrt{\cos^2(t^2) + e^t} = 3$$

$$t = 2.196$$
 (or 2.195)

2 : { 1 : speed in terms of t
1 : answer

(d) Distance = $\int_0^1 \sqrt{\cos^2(t^2) + e^t} dt = 1.595$ (or 1.594)

2 : { 1 : integral
1 : answer

2015 AP[®] CALCULUS BC FREE-RESPONSE QUESTIONS

AB/BC

CALCULUS BC
SECTION II, Part B

Time—60 minutes

Number of problems—4

No calculator is allowed for these problems.

units
minutes
meters

t (minutes)	0	12	20	24	40
$v(t)$ (meters per minute)	0	200	240	-220	150

↑ continuous function

3. Johanna jogs along a straight path. For $0 \leq t \leq 40$, Johanna's velocity is given by a differentiable function v . Selected values of $v(t)$, where t is measured in minutes and $v(t)$ is measured in meters per minute, are given in the table above.

(a) Use the data in the table to estimate the value of $v'(16)$. Slope of v

(b) Using correct units, explain the meaning of the definite integral $\int_0^{40} |v(t)| dt$ in the context of the problem.

Approximate the value of $\int_0^{40} |v(t)| dt$ using a right Riemann sum with the four subintervals indicated in the table.

(c) Bob is riding his bicycle along the same path. For $0 \leq t \leq 10$, Bob's velocity is modeled by

$$B(t) = t^3 - 6t^2 + 300$$

where t is measured in minutes and $B(t)$ is measured in meters per minute.

Find Bob's acceleration at time $t = 5$.

(d) Based on the model B from part (c), find Bob's average velocity during the interval $0 \leq t \leq 10$.

(a) $v'(16) = \frac{v(20) - v(12)}{20 - 12} = \frac{240 - 200}{20 - 12} = \frac{40}{8} = 5 \text{ m/min}^2$

Slope

(b) $\int_0^{40} |v(t)| dt$ is the total distance that Johanna jogs, in meters, from time $t=0$ to $t=40$ min.

$$\int_0^{40} |v(t)| dt = (12)(200) + (8)(240) + (4)(+220) + (16)(150) = 7600 \text{ m}$$

Right Riemann

© 2015 The College Board.
Visit the College Board on the Web: www.collegeboard.org.

GO ON TO THE NEXT PAGE.

↑ Take absolute value

Bob's velocity:

$$(c) B(t) = t^3 - 6t^2 + 300$$

$t = \text{min}$

$B(t) = \text{m/min}$

Bob's accler. at $t=5$

$$B'(t) = 3t^2 - 12t + 0$$

$$B'(5) = 3(5)^2 - 12(5)$$

$$= 75 - 60 = \boxed{15 \text{ m/min}^2}$$

(d) Bob's Avg. velocity $0 \leq t \leq 10$

$$\text{Avg. velocity} = \frac{1}{b-a} \int_a^b v(t) dt$$

$$\frac{1}{10-0} \int_0^{10} t^3 - 6t^2 + 300 dt$$

$$\frac{1}{10} \left[\frac{1}{4}t^4 - 2t^3 + 300t \right]_0^{10}$$

$$\frac{1}{10} \left[\frac{1}{4}(10)^4 - 2(10)^3 + 300(10) \right] = 350 \text{ m/min}$$

**AP[®] CALCULUS AB/CALCULUS BC
2015 SCORING GUIDELINES**

Question 3

t (minutes)	0	12	20	24	40
$v(t)$ (meters per minute)	0	200	240	-220	150

Johanna jogs along a straight path. For $0 \leq t \leq 40$, Johanna's velocity is given by a differentiable function v . Selected values of $v(t)$, where t is measured in minutes and $v(t)$ is measured in meters per minute, are given in the table above.

- (a) Use the data in the table to estimate the value of $v'(16)$.
- (b) Using correct units, explain the meaning of the definite integral $\int_0^{40} |v(t)| dt$ in the context of the problem.

Approximate the value of $\int_0^{40} |v(t)| dt$ using a right Riemann sum with the four subintervals indicated in the table.

- (c) Bob is riding his bicycle along the same path. For $0 \leq t \leq 10$, Bob's velocity is modeled by $B(t) = t^3 - 6t^2 + 300$, where t is measured in minutes and $B(t)$ is measured in meters per minute.

Find Bob's acceleration at time $t = 5$.

- (d) Based on the model B from part (c), find Bob's average velocity during the interval $0 \leq t \leq 10$.

(a) $v'(16) \approx \frac{240 - 200}{20 - 12} = 5 \text{ meters/min}^2$

1 : approximation

- (b) $\int_0^{40} |v(t)| dt$ is the total distance Johanna jogs, in meters, over the time interval $0 \leq t \leq 40$ minutes.

3 : $\left\{ \begin{array}{l} 1 : \text{explanation} \\ 1 : \text{right Riemann sum} \\ 1 : \text{approximation} \end{array} \right.$

$$\begin{aligned} \int_0^{40} |v(t)| dt &\approx 12 \cdot |v(12)| + 8 \cdot |v(20)| + 4 \cdot |v(24)| + 16 \cdot |v(40)| \\ &= 12 \cdot 200 + 8 \cdot 240 + 4 \cdot 220 + 16 \cdot 150 \\ &= 2400 + 1920 + 880 + 2400 \\ &= 7600 \text{ meters} \end{aligned}$$

- (c) Bob's acceleration is $B'(t) = 3t^2 - 12t$.
 $B'(5) = 3(25) - 12(5) = 15 \text{ meters/min}^2$

2 : $\left\{ \begin{array}{l} 1 : \text{uses } B'(t) \\ 1 : \text{answer} \end{array} \right.$

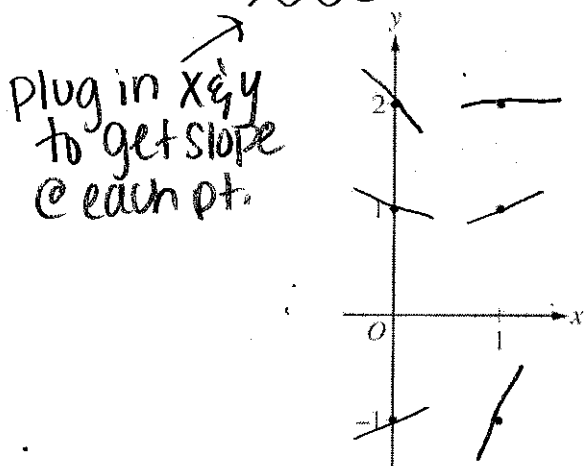
(d) Avg vel = $\frac{1}{10} \int_0^{10} (t^3 - 6t^2 + 300) dt$

$$\begin{aligned} &= \frac{1}{10} \left[\frac{t^4}{4} - 2t^3 + 300t \right]_0^{10} \\ &= \frac{1}{10} \left[\frac{10000}{4} - 2000 + 3000 \right] = 350 \text{ meters/min} \end{aligned}$$

3 : $\left\{ \begin{array}{l} 1 : \text{integral} \\ 1 : \text{antiderivative} \\ 1 : \text{answer} \end{array} \right.$

4. Consider the differential equation $\frac{dy}{dx} = 2x - y$.

(a) On the axes provided, sketch a slope field for the given differential equation at the six points indicated.



$$(0, 2) \rightarrow 2(0) - 2 = -2$$

$$(0, 1) \rightarrow 2(0) - 1 = -1$$

$$(0, -1) \rightarrow 2(0) - (-1) = 1$$

$$(1, 2) \rightarrow 2(1) - 2 = 0$$

$$(1, 1) \rightarrow 2(1) - 1 = 1$$

$$(1, -1) \rightarrow 2(1) - (-1) = 3$$

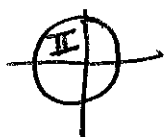
(b) Find $\frac{d^2y}{dx^2}$ in terms of x and y . Determine the concavity of all solution curves for the given differential equation in Quadrant II. Give a reason for your answer.

(c) Let $y = f(x)$ be the particular solution to the differential equation with the initial condition $f(2) = 3$. Does f have a relative minimum, a relative maximum, or neither at $x = 2$? Justify your answer.

(d) Find the values of the constants m and b for which $y = mx + b$ is a solution to the differential equation.

(b) $\frac{d^2y}{dx^2} = 2 - 1 \frac{dy}{dx} = 2 - (2x - y) = \boxed{2 - 2x + y}$

Quadrant II



x is negative
 y is positive

$$2 - 2(-\#) + (+\#) = +\#$$

$$\frac{d^2y}{dx^2} > 0 \text{ for Q II,}$$

So Concave up

$$(c) \quad y = f(x) \quad f(2) = 3$$

$$\frac{dy}{dx} = 2x - y$$

$$= 2(2) - 3 = 1$$

$\frac{dy}{dx} > 0$ at $(2, 3)$ so this means $(2, 3)$ is not a critical point, so it is neither a max or min.

$$(d) \quad y = mx + b \quad \text{Find } m \text{ \& } b$$

$$\frac{dy}{dx} = m$$

$$\frac{dy}{dx} = 2x - y \quad (\text{from original})$$

$$m = 2x - y$$

$$m = 2x - (mx + b)$$

$$m = 2x - mx - b$$

$$0 = 2x - mx - b - m$$

$$0x + 0 = x(2 - m) + (-b - m)$$

$$0 = 2 - m$$
$$-2 = -m$$
$$\boxed{m = 2}$$

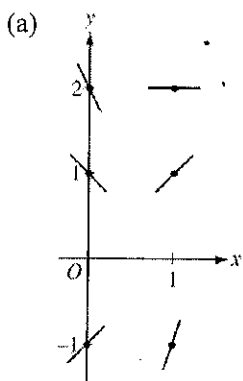
$$0 = -b - m$$
$$0 = -b - 2$$
$$2 = -b$$
$$\boxed{b = -2}$$

**AP[®] CALCULUS AB/CALCULUS BC
2015 SCORING GUIDELINES**

Question 4

Consider the differential equation $\frac{dy}{dx} = 2x - y$.

- (a) On the axes provided, sketch a slope field for the given differential equation at the six points indicated.
- (b) Find $\frac{d^2y}{dx^2}$ in terms of x and y . Determine the concavity of all solution curves for the given differential equation in Quadrant II. Give a reason for your answer.
- (c) Let $y = f(x)$ be the particular solution to the differential equation with the initial condition $f(2) = 3$. Does f have a relative minimum, a relative maximum, or neither at $x = 2$? Justify your answer.
- (d) Find the values of the constants m and b for which $y = mx + b$ is a solution to the differential equation.



$$2 : \begin{cases} 1 : \text{slopes where } x = 0 \\ 1 : \text{slopes where } x = 1 \end{cases}$$

(b) $\frac{d^2y}{dx^2} = 2 - \frac{dy}{dx} = 2 - (2x - y) = 2 - 2x + y$

In Quadrant II, $x < 0$ and $y > 0$, so $2 - 2x + y > 0$.
Therefore, all solution curves are concave up in Quadrant II.

$$2 : \begin{cases} 1 : \frac{d^2y}{dx^2} \\ 1 : \text{concave up with reason} \end{cases}$$

(c) $\left. \frac{dy}{dx} \right|_{(x,y)=(2,3)} = 2(2) - 3 = 1 \neq 0$

Therefore, f has neither a relative minimum nor a relative maximum at $x = 2$.

$$2 : \begin{cases} 1 : \text{considers } \left. \frac{dy}{dx} \right|_{(x,y)=(2,3)} \\ 1 : \text{conclusion with justification} \end{cases}$$

(d) $y = mx + b \Rightarrow \frac{dy}{dx} = \frac{d}{dx}(mx + b) = m$

$$2x - y = m$$

$$2x - (mx + b) = m$$

$$(2 - m)x - (m + b) = 0$$

$$2 - m = 0 \Rightarrow m = 2$$

$$b = -m \Rightarrow b = -2$$

Therefore, $m = 2$ and $b = -2$.

$$3 : \begin{cases} 1 : \frac{d}{dx}(mx + b) = m \\ 1 : 2x - y = m \\ 1 : \text{answer} \end{cases}$$



2015 AP[®] CALCULUS BC FREE-RESPONSE QUESTIONS

no units

5. Consider the function $f(x) = \frac{1}{x^2 - kx}$, where k is a nonzero constant. The derivative of f is given by

$f'(x) = \frac{k - 2x}{(x^2 - kx)^2}$

(a) Let $k = 3$, so that $f(x) = \frac{1}{x^2 - 3x}$. Write an equation for the line tangent to the graph of f at the point whose x -coordinate is 4.

(b) Let $k = 4$, so that $f(x) = \frac{1}{x^2 - 4x}$. Determine whether f has a relative minimum, a relative maximum, or neither at $x = 2$. Justify your answer.

(c) Find the value of k for which f has a critical point at $x = -5$.

(d) Let $k = 6$, so that $f(x) = \frac{1}{x^2 - 6x}$. Find the partial fraction decomposition for the function f .

Find $\int f(x) dx$.

5) $k=3$ $f(x) = \frac{1}{x^2 - 3x}$, $x=4$

point: $x=4$ $y = \frac{1}{(4)^2 - 3(4)} = \frac{1}{16-12} = \frac{1}{4}$ $(4, \frac{1}{4})$

slope: $f'(x) = \frac{k-2x}{(x^2-kx)^2} = \frac{3-2x}{(x^2-3x)^2} = \frac{3-2(4)}{(4^2-3(4))^2} = \frac{-5}{(16-12)^2}$

$y - \frac{1}{4} = -\frac{5}{16}(x-4)$

$= \frac{-5}{16}$

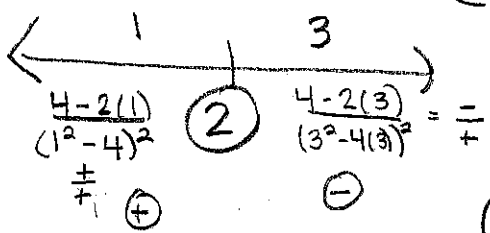
b) $k=4$, $f(x) = \frac{1}{x^2-4x} \rightarrow f'(x) = \frac{4-2x}{(x^2-4x)^2} = 0$

$4-2x=0$
 $-2x=-4$

$x=2$ critical pt

© 2015 The College Board. Visit the College Board on the Web: www.collegeboard.org.

GO ON TO THE NEXT PAGE.



$\oplus \rightarrow \ominus$ rel. maximum

(c) critical point at $x = -5$ $f'(-5) = 0$

$$f'(x) = \frac{k - 2x}{(x^2 - kx)^2}$$

$$f'(-5) = \frac{k - 2(-5)}{((-5)^2 - k(-5))^2} = 0$$

$$k + 10 = 0$$

$$\boxed{k = -10}$$

(d) $k = 6$ $f(x) = \frac{1}{x^2 - 6x} = \frac{1}{x(x-6)}$

$$\frac{1}{x(x-6)} = \frac{A}{x} + \frac{B}{x-6}$$

$$1 = A(x-6) + B(x)$$

$x = 6$:

$$1 = A(\cancel{6-6}) + B(6)$$

$$B = 1/6$$

$x = 0$:

$$1 = A(0-6) + B(\cancel{0})$$

$$A = -1/6$$

$$f(x) =$$

$$\int \left(\frac{-1/6}{x} + \frac{1/6}{x-6} \right)$$

$$u = x$$

$$du = dx$$

$$-\frac{1}{6} \int \frac{du}{u}$$

$$u = x-6$$

$$du = dx$$

$$+\frac{1}{6} \int \frac{du}{u}$$

$$\int f(x) = -\frac{1}{6} \ln|x| + \frac{1}{6} \ln|x-6| + C$$

AP[®] CALCULUS BC
2015 SCORING GUIDELINES

Question 5

Consider the function $f(x) = \frac{1}{x^2 - kx}$, where k is a nonzero constant. The derivative of f is given by

$$f'(x) = \frac{k - 2x}{(x^2 - kx)^2}.$$

- (a) Let $k = 3$, so that $f(x) = \frac{1}{x^2 - 3x}$. Write an equation for the line tangent to the graph of f at the point whose x -coordinate is 4.
- (b) Let $k = 4$, so that $f(x) = \frac{1}{x^2 - 4x}$. Determine whether f has a relative minimum, a relative maximum, or neither at $x = 2$. Justify your answer.
- (c) Find the value of k for which f has a critical point at $x = -5$.
- (d) Let $k = 6$, so that $f(x) = \frac{1}{x^2 - 6x}$. Find the partial fraction decomposition for the function f .

Find $\int f(x) dx$.

(a) $f(4) = \frac{1}{4^2 - 3 \cdot 4} = \frac{1}{4}$ $f'(4) = \frac{3 - 2 \cdot 4}{(4^2 - 3 \cdot 4)^2} = -\frac{5}{16}$

An equation for the line tangent to the graph of f at the point whose x -coordinate is 4 is $y = -\frac{5}{16}(x - 4) + \frac{1}{4}$.

(b) $f'(x) = \frac{4 - 2x}{(x^2 - 4x)^2}$ $f'(2) = \frac{4 - 2 \cdot 2}{(2^2 - 4 \cdot 2)^2} = 0$

$f'(x)$ changes sign from positive to negative at $x = 2$.
Therefore, f has a relative maximum at $x = 2$.

(c) $f'(-5) = \frac{k - 2 \cdot (-5)}{((-5)^2 - k \cdot (-5))^2} = 0 \Rightarrow k = -10$

(d) $\frac{1}{x^2 - 6x} = \frac{1}{x(x - 6)} = \frac{A}{x} + \frac{B}{x - 6} \Rightarrow 1 = A(x - 6) + Bx$
 $x = 0 \Rightarrow 1 = A \cdot (-6) \Rightarrow A = -\frac{1}{6}$

$x = 6 \Rightarrow 1 = B \cdot (6) \Rightarrow B = \frac{1}{6}$

$\frac{1}{x(x - 6)} = \frac{-1/6}{x} + \frac{1/6}{x - 6}$

$\int f(x) dx = \int \left(\frac{-1/6}{x} + \frac{1/6}{x - 6} \right) dx$

$= -\frac{1}{6} \ln|x| + \frac{1}{6} \ln|x - 6| + C = \frac{1}{6} \ln \left| \frac{x - 6}{x} \right| + C$

2 : $\begin{cases} 1 : \text{slope} \\ 1 : \text{tangent line equation} \end{cases}$

2 : $\begin{cases} 1 : \text{considers } f'(2) \\ 1 : \text{answer with justification} \end{cases}$

1 : answer

4 : $\begin{cases} 2 : \text{partial fraction decomposition} \\ 2 : \text{general antiderivative} \end{cases}$



2015 AP[®] CALCULUS BC FREE-RESPONSE QUESTIONS

6. The Maclaurin series for a function f is given by $\sum_{n=1}^{\infty} \frac{(-3)^{n-1}}{n} x^n = x - \frac{3}{2}x^2 + 3x^3 - \dots + \frac{(-3)^{n-1}}{n} x^n + \dots$ and converges to $f(x)$ for $|x| < R$, where R is the radius of convergence of the Maclaurin series.

- (a) Use the ratio test to find R .
- (b) Write the first four nonzero terms of the Maclaurin series for f' , the derivative of f . Express f' as a rational function for $|x| < R$.
- (c) Write the first four nonzero terms of the Maclaurin series for e^x . Use the Maclaurin series for e^x to write the third-degree Taylor polynomial for $g(x) = e^x f(x)$ about $x = 0$.

X³

$$(a) \lim_{n \rightarrow \infty} \left| \frac{(-3)^n x^{n+1}}{(n+1)} \cdot \frac{n}{(-3)^{n-1} x^n} \right|$$

$$\lim_{n \rightarrow \infty} \left| \frac{3x(n)}{(n+1)} \right| = 3x \lim_{n \rightarrow \infty} \left| \frac{n}{n+1} \right| = 3x$$

$$3x < 1$$

$$x < \frac{1}{3}$$

$$R = \frac{1}{3}$$

STOP

END OF EXAM

$$(b) f(x) = \sum_{n=1}^{\infty} (-3)^{n-1} \cdot \frac{1}{n} x^n$$

$$f'(x) = \sum_{n=1}^{\infty} (-3)^{n-1} x^{n-1}$$

$$n=1: (-3)^{1-1} x^{1-1} = 1 = a$$

$$n=2: (-3)^{2-1} x^{2-1} = -3x$$

$$n=3: (-3)^{3-1} x^{3-1} = 9x^2$$

$$n=4: (-3)^{4-1} x^{4-1} = -27x^3$$

Geometric

$$f'(x) = \frac{a}{1-r} = \frac{1}{1-(-3x)}$$

$$f'(x) = \frac{1}{1+3x}$$

© 2015 The College Board.

Visit the College Board on the Web: www.collegeboard.org.

$$f'(x) = 1 - 3x + 9x^2 - 27x^3 + \dots$$

memorize!

(c)

$$e^x = \sum_{n=0}^{\infty} \frac{x^n}{n!}$$

$$n=0 : \frac{x^0}{0!} = 1$$

$$n=1 : \frac{x^1}{1!} = x$$

$$n=2 : \frac{x^2}{2!} = \frac{1}{2}x^2$$

$$n=3 : \frac{x^3}{3!} = \frac{1}{6}x^3$$

$$e^x = 1 + x + \frac{1}{2}x^2 + \frac{1}{6}x^3$$

$g(x) = e^x f(x) \rightarrow$ 3rd degree (x^2)

$$(1 + x + \frac{1}{2}x^2 + \frac{1}{6}x^3) (x - \frac{3}{2}x^2 + 3x^3 + \dots)$$

$$1(x - \frac{3}{2}x^2 + 3x^3) + x(x - \frac{3}{2}x^2 + 3x^3) + \frac{1}{2}x^2(x - \frac{3}{2}x^2 + 3x^3) + \frac{1}{6}x^3(x - \frac{3}{2}x^2 + 3x^3)$$

$$x - \frac{3}{2}x^2 + 3x^3 + x^2 - \frac{3}{2}x^3 + 3x^4 + \frac{1}{2}x^3 - \frac{3}{4}x^4 + \frac{3}{2}x^5 + \frac{1}{6}x^4 + \dots$$

$$x - \frac{1}{2}x^2 + 2x^3$$

AP[®] CALCULUS BC
2015 SCORING GUIDELINES

Question 6

The Maclaurin series for a function f is given by $\sum_{n=1}^{\infty} \frac{(-3)^{n-1}}{n} x^n = x - \frac{3}{2}x^2 + 3x^3 - \dots + \frac{(-3)^{n-1}}{n} x^n + \dots$ and converges to $f(x)$ for $|x| < R$, where R is the radius of convergence of the Maclaurin series.

- (a) Use the ratio test to find R .
- (b) Write the first four nonzero terms of the Maclaurin series for f' , the derivative of f . Express f' as a rational function for $|x| < R$.
- (c) Write the first four nonzero terms of the Maclaurin series for e^x . Use the Maclaurin series for e^x to write the third-degree Taylor polynomial for $g(x) = e^x f(x)$ about $x = 0$.

- (a) Let a_n be the n th term of the Maclaurin series.

$$\frac{a_{n+1}}{a_n} = \frac{(-3)^n x^{n+1}}{n+1} \cdot \frac{n}{(-3)^{n-1} x^n} = \frac{-3n}{n+1} x$$

$$\lim_{n \rightarrow \infty} \left| \frac{-3n}{n+1} x \right| = 3|x|$$

$$3|x| < 1 \Rightarrow |x| < \frac{1}{3}$$

The radius of convergence is $R = \frac{1}{3}$.

- (b) The first four nonzero terms of the Maclaurin series for f' are $1 - 3x + 9x^2 - 27x^3$.

$$f'(x) = \frac{1}{1 - (-3x)} = \frac{1}{1 + 3x}$$

- (c) The first four nonzero terms of the Maclaurin series for e^x are $1 + x + \frac{x^2}{2!} + \frac{x^3}{3!}$.

The product of the Maclaurin series for e^x and the Maclaurin series for f is

$$\begin{aligned} & \left(1 + x + \frac{x^2}{2!} + \frac{x^3}{3!} + \dots \right) \left(x - \frac{3}{2}x^2 + 3x^3 - \dots \right) \\ &= x - \frac{1}{2}x^2 + 2x^3 + \dots \end{aligned}$$

The third-degree Taylor polynomial for $g(x) = e^x f(x)$

about $x = 0$ is $T_3(x) = x - \frac{1}{2}x^2 + 2x^3$.

3 : $\begin{cases} 1 : \text{sets up ratio} \\ 1 : \text{computes limit of ratio} \\ 1 : \text{determines radius of convergence} \end{cases}$

3 : $\begin{cases} 2 : \text{first four nonzero terms} \\ 1 : \text{rational function} \end{cases}$

3 : $\begin{cases} 1 : \text{first four nonzero terms} \\ \quad \text{of the Maclaurin series for } e^x \\ 2 : \text{Taylor polynomial} \end{cases}$